

## Where does stormwater go?

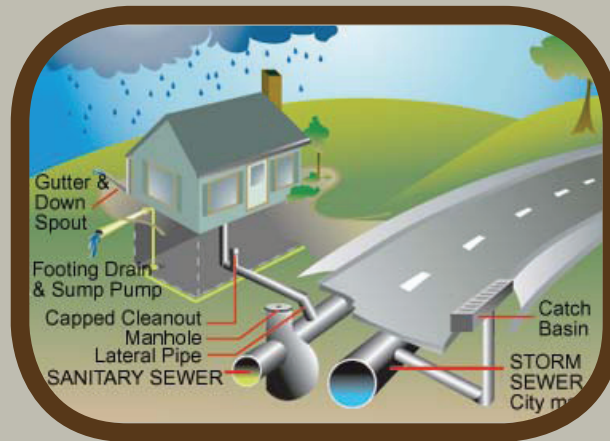
Any stormwater that enters a catch basin, storm sewer, or drainage ditch does not get treated at a wastewater treatment plant. The water flows directly to our rivers, streams and Lake Erie, untreated.



This means any pollution that stormwater picks up along the way also enters Lake Erie, where 40,000 Lake County residents get their drinking water.

## Connected to the sanitary sewer?

Sanitary sewers in Lake County are maintained by the Lake County Department of Utilities, City of Eastlake, City of Willoughby, City of Painesville, or the Village of Madison.



If you are connected to the sanitary sewer, all household wastewater flows to a wastewater treatment plant, where it is cleaned. Storm water is kept separate from our sanitary wastewater.

It is important to ensure all household wastewater is connected to the sanitary sewer and not the storm sewer system.

To report a sewage complaint contact:

Lake County  
General Health  
District

(440) 350-2543

Lake County Stormwater  
Management Department

(440) 350-5900



## WHERE DOES YOUR SEWAGE GO?



Protect our  
Great Lake,  
Keep Sewage  
Where It Belongs

#LakeErieDontWasteIt

Are you one of the 15,000 Lake County households with a septic system?

Is your's working properly?

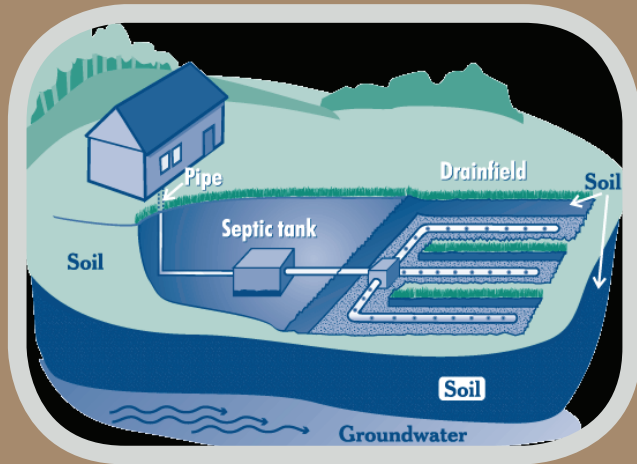
A failing septic system is not only gross, it is harmful to public health and the environment.

Sewage contains bacteria, pathogens, and nutrients that can be carried away with stormwater. Since stormwater is untreated, the sewage flows directly to our rivers and Lake Erie.



How septic systems work?

The most common sewage treatment system contains a septic tank and leach lines, or trench, as shown below. All wastewater stays underground and is treated



by filtering through the soil.

Other sewage treatment systems include: Mounds, Aeration Systems or Discharging Systems.



What are signs of a failing system?

1.

Sewage backing up in the house.



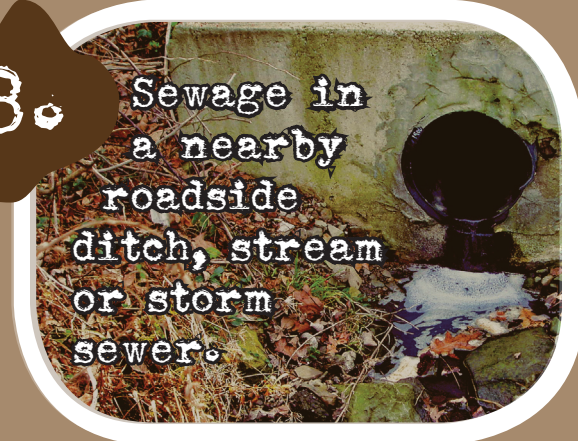
2.

Sewage surfacing on the ground near leach lines.



3.

Sewage in a nearby roadside ditch, stream or storm sewer.



If it's failing, what should I do?

If there is a problem with your septic system, contact the Lake County General Health District for assistance at (440) 350-2543.

How can I prevent a failure?

To help minimize the risk of failure, perform routine maintenance of your system.

Be mindful of what you flush and put down the drain.

Pump your septic system every 3-5 years.

Conserve water.

Do not drive over or put heavy materials over your septic system.