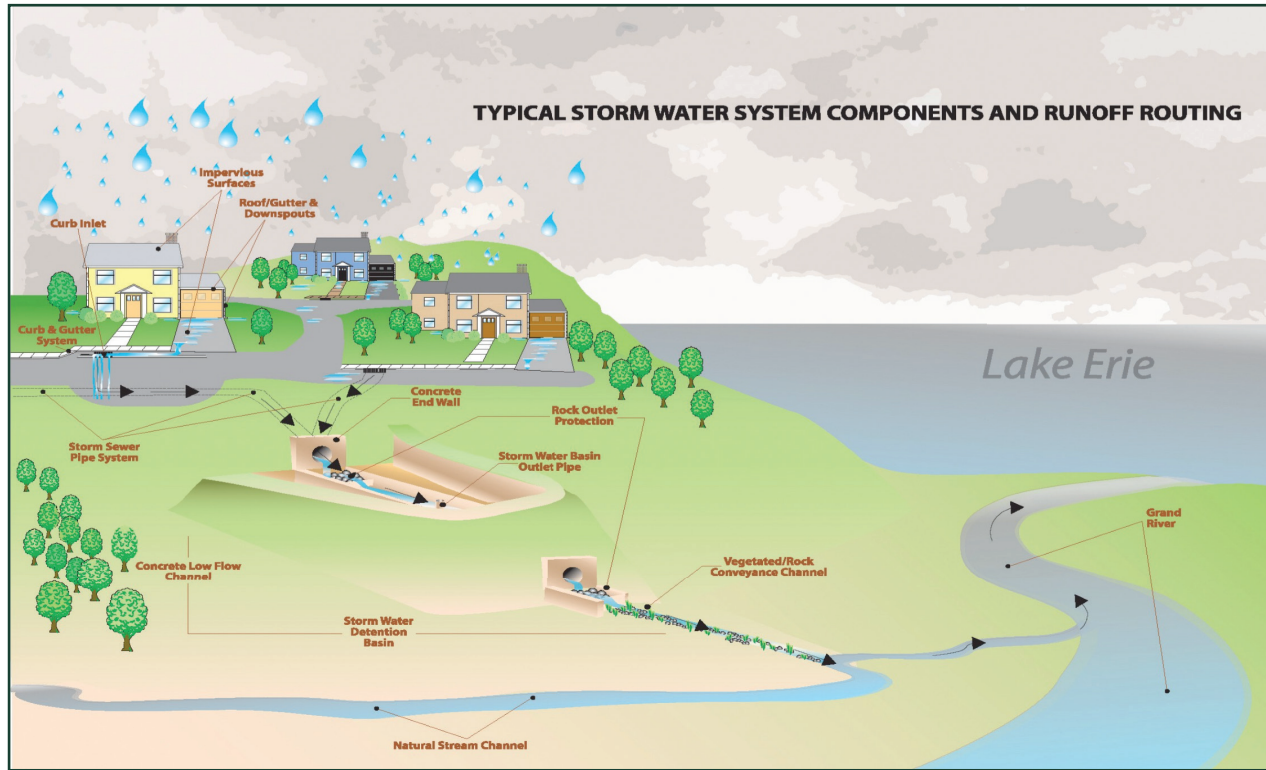


What is Stormwater?

All rain and snow melt flows off our roofs, lawns, and driveways, into the street and storm sewers, and directly to our rivers and lakes untreated.



Stormwater Pollution

The stormwater collects pollutants and chemicals along the way, which can render it harmful to public health, to animal or aquatic life, and for domestic uses. Often times, pollutants are directly dumped or discharged to the storm sewer system from households or businesses. This deliberate dumping is called an illicit discharge, which is defined as any discharge not entirely composed of stormwater.

Suspicious discharges to the storm sewer system should be reported to the Lake County General Health District or the Lake County Stormwater Management Department for investigation.

Lake County
Stormwater
Management
Department
(440) 350-5900

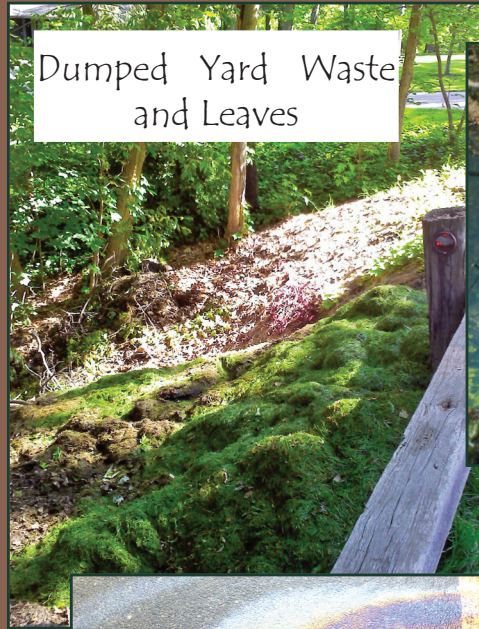


Recognizing
Stormwater
Pollution
In Your Neighborhood

Report Pollution To:
Lake County
General Health District
(440) 350-2543

Lake County Stormwater
Management Department

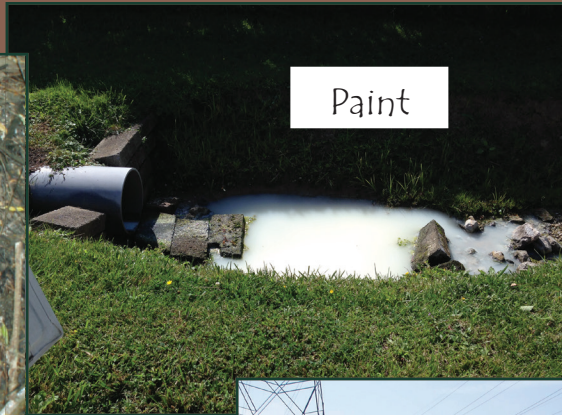
Examples of Stormwater Pollution



Dumped Yard Waste and Leaves



Chemicals



Paint



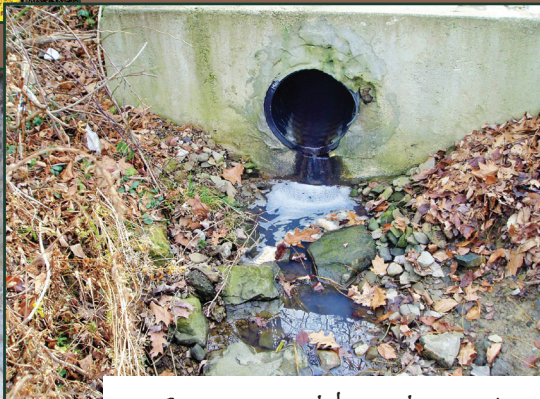
Sediment



Fuel and Oil Spills



Cooking Grease



Sewage and laundry water in storm sewers and road ditches



NOT Stormwater Pollution



Iron, algal growth, and resulting oil-like sheen



Sulfur Reducing Bacteria and Algal Growth



Naturally Occurring Foam