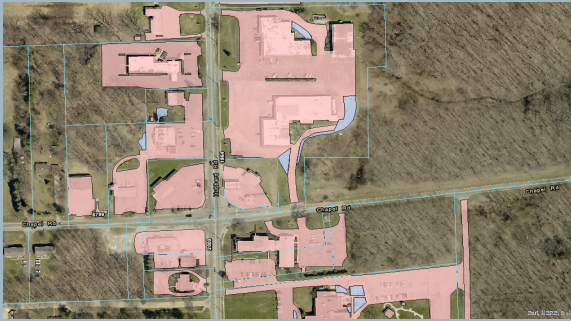


WHY IS THERE A STORMWATER ASSESSMENT FEE?

A federal mandate requires that certain communities implement a stormwater management program to reduce the amount of pollutants entering natural water bodies. Lake County formed a regional utility to assist communities to comply with the regulations. The fee collected is used to manage the stormwater program, ensure regulatory compliance, and complete infrastructure improvements to reduce flooding and improve water quality.

HOW ARE THE FEES CALCULATED?



All residential properties are charged a flat fee of \$3.50 per month, which is collected with the property tax. Non-residential property fees are based on the amount of impervious surface contained on the site (areas shaded pink in photo). Impervious surfaces are used because they are a good indicator of the amount of runoff generated on that site. The calculated impervious area is then divided by an Equivalent Residential Unit (ERU) of 3,050 square feet, to determine the amount of ERU's are on the site. The ERU is then multiplied by \$3.50 to determine the appropriate fee.

FOR MORE DETAILED INFORMATION:

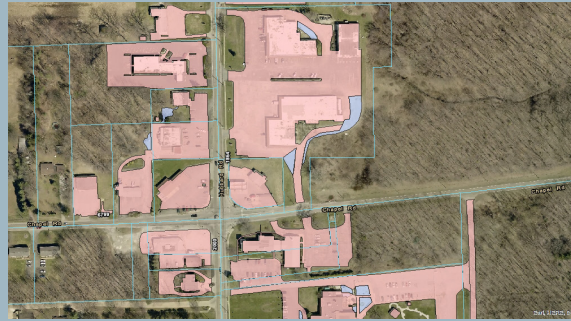


(440) 350-5900
lakecountyohio.gov/smd

WHY IS THERE A STORMWATER ASSESSMENT FEE?

A federal mandate requires that certain communities implement a stormwater management program to reduce the amount of pollutants entering natural water bodies. Lake County formed a regional utility to assist communities to comply with the regulations. The fee collected is used to manage the stormwater program, ensure regulatory compliance, and complete infrastructure improvements to reduce flooding and improve water quality.

HOW ARE THE FEES CALCULATED?



All residential properties are charged a flat fee of \$3.50 per month, which is collected with the property tax. Non-residential property fees are based on the amount of impervious surface contained on the site (areas shaded pink in photo). Impervious surfaces are used because they are a good indicator of the amount of runoff generated on that site. The calculated impervious area is then divided by an Equivalent Residential Unit (ERU) of 3,050 square feet, to determine the amount of ERU's are on the site. The ERU is then multiplied by \$3.50 to determine the appropriate fee.

FOR MORE DETAILED INFORMATION:



(440) 350-5900
lakecountyohio.gov/smd

WHY IS THERE A STORMWATER ASSESSMENT FEE?

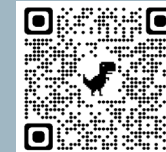
A federal mandate requires that certain communities implement a stormwater management program to reduce the amount of pollutants entering natural water bodies. Lake County formed a regional utility to assist communities to comply with the regulations. The fee collected is used to manage the stormwater program, ensure regulatory compliance, and complete infrastructure improvements to reduce flooding and improve water quality.

HOW ARE THE FEES CALCULATED?



All residential properties are charged a flat fee of \$3.50 per month, which is collected with the property tax. Non-residential property fees are based on the amount of impervious surface contained on the site (areas shaded pink in photo). Impervious surfaces are used because they are a good indicator of the amount of runoff generated on that site. The calculated impervious area is then divided by an Equivalent Residential Unit (ERU) of 3,050 square feet, to determine the amount of ERU's are on the site. The ERU is then multiplied by \$3.50 to determine the appropriate fee.

FOR MORE DETAILED INFORMATION:



(440) 350-5900
lakecountyohio.gov/smd

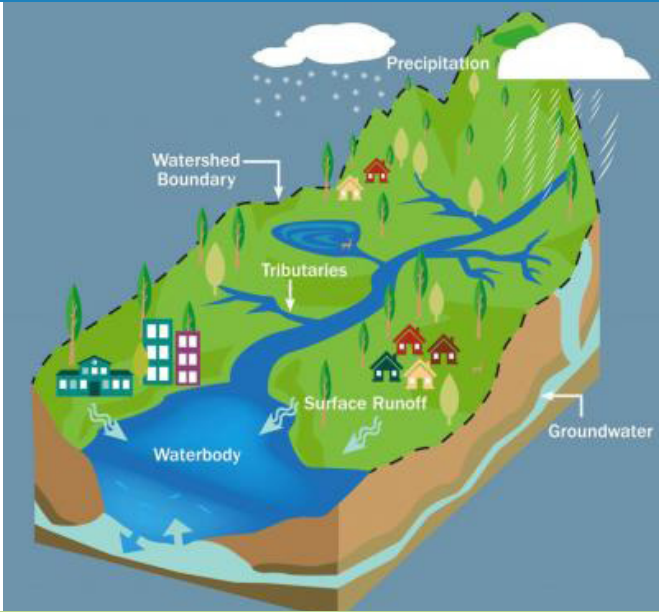
Lake County Stormwater Management Department



Lake County Stormwater Management Department



Lake County Stormwater Management Department



WHY A STORMWATER DEPARTMENT?

Pollution from stormwater is one of the main threats to our lakes and rivers, therefore the U.S. Environmental Protection Agency (EPA) implemented stormwater regulations. The regulations help eliminate and reduce pollutants in stormwater entering the storm sewers and ditches in your neighborhood. The Lake County Stormwater Management Department (LCSMD) assists its member communities with compliance, along with infrastructure improvements, projects, and restoration.

MEMBER COMMUNITIES

Concord Twp	Mentor on the Lake
Eastlake	Painesville City
Fairport Harbor	Painesville Twp
Grand River	Perry Village
Kirtland	Timberlake
Kirtland Hills	Willoughby
Lakeline	Willoughby Hills
Madison Twp	Willowick
Madison Village	

WHY A STORMWATER DEPARTMENT?

Pollution from stormwater is one of the main threats to our lakes and rivers, therefore the U.S. Environmental Protection Agency (EPA) implemented stormwater regulations. The regulations help eliminate and reduce pollutants in stormwater entering the storm sewers and ditches in your neighborhood. The Lake County Stormwater Management Department (LCSMD) assists its member communities with compliance, along with infrastructure improvements, projects, and restoration.

MEMBER COMMUNITIES

Concord Twp	Mentor on the Lake
Eastlake	Painesville City
Fairport Harbor	Painesville Twp
Grand River	Perry Village
Kirtland	Timberlake
Kirtland Hills	Willoughby
Lakeline	Willoughby Hills
Madison Twp	Willowick
Madison Village	

WHY A STORMWATER DEPARTMENT?

Pollution from stormwater is one of the main threats to our lakes and rivers, therefore the U.S. Environmental Protection Agency (EPA) implemented stormwater regulations. The regulations help eliminate and reduce pollutants in stormwater entering the storm sewers and ditches in your neighborhood. The Lake County Stormwater Management Department (LCSMD) assists its member communities with compliance, along with infrastructure improvements, projects, and restoration.

MEMBER COMMUNITIES

Concord Twp	Mentor on the Lake
Eastlake	Painesville City
Fairport Harbor	Painesville Twp
Grand River	Perry Village
Kirtland	Timberlake
Kirtland Hills	Willoughby
Lakeline	Willoughby Hills
Madison Twp	Willowick
Madison Village	