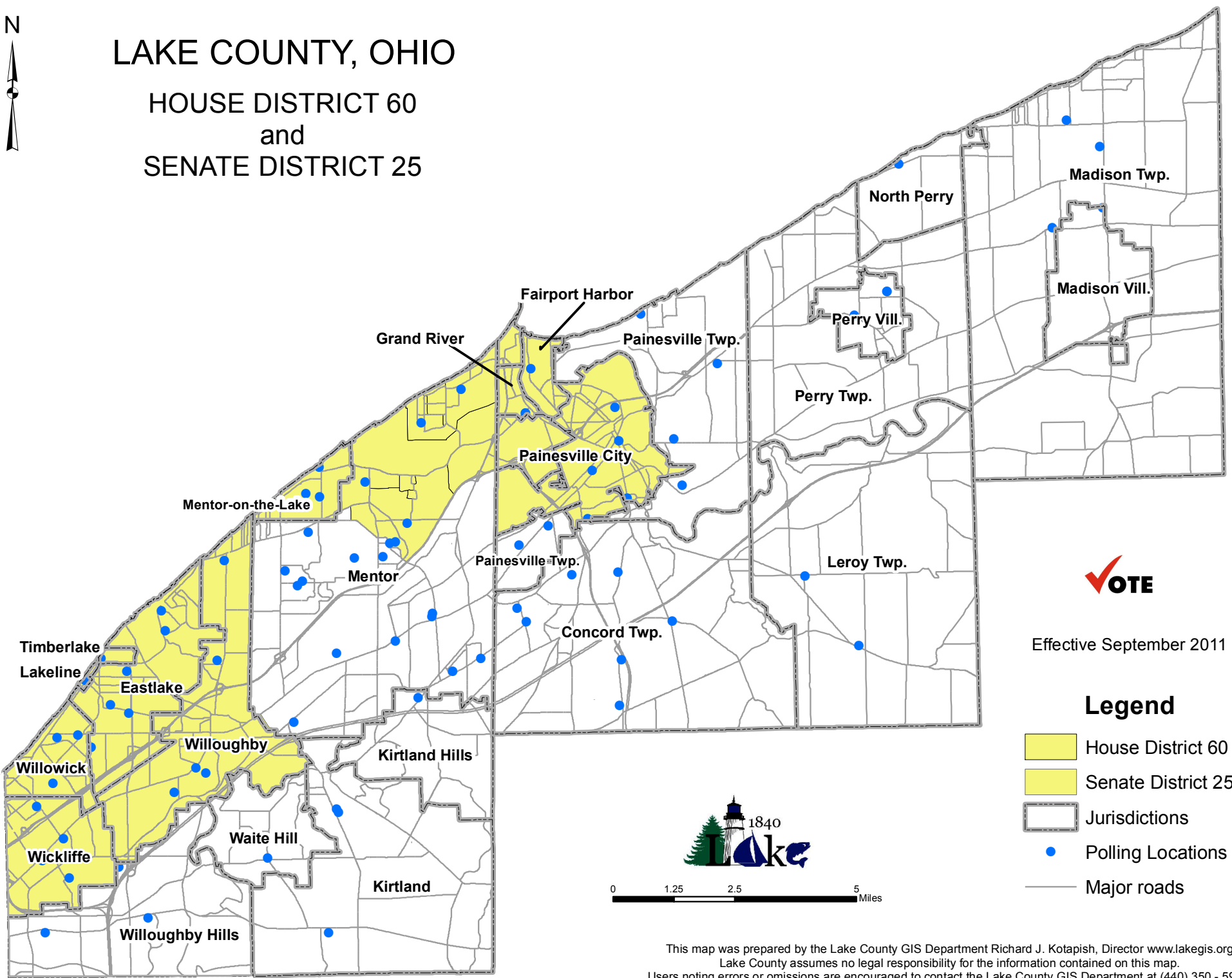





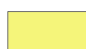



# LAKE COUNTY, OHIO

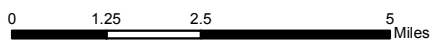
## HOUSE DISTRICT 60 and SENATE DISTRICT 25



Effective September 2011

### Legend

-  House District 60
-  Senate District 25
-  Jurisdictions
-  Polling Locations
-  Major roads



This map was prepared by the Lake County GIS Department Richard J. Kotapish, Director [www.lakegis.org](http://www.lakegis.org)  
Lake County assumes no legal responsibility for the information contained on this map.  
Users noting errors or omissions are encouraged to contact the Lake County GIS Department at (440) 350 - 5943.